

Quick Start Guide

Ver 1.0

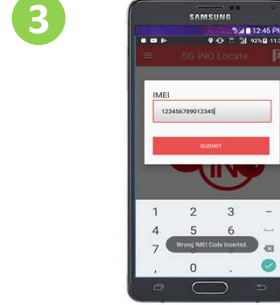
SGINO Locate



1 Look for the SGINO icon at the Home screen OR you can download SGINO apps from Google Play Store for Android.



2 Device IMEI is needed to activate the tracking application.

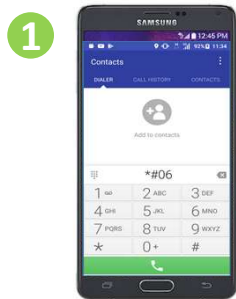


3 System will prompt "Wrong IMEI" if wrong IMEI nos is key in.



4 SGINO Locate is activated and the GPS Location will be turn ON.

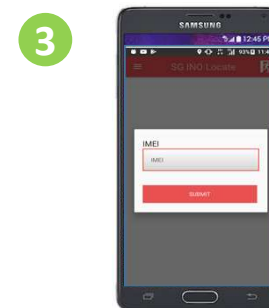
Getting of Device's IMEI Number



1 Go to Phone/Call, input "*#06#" and press the Call Button, the device IMEI will display on the screen.



2 Note down the IMEI Nos and Key it into SGINO application.



3 Key in the IMEI Nos to activate the tracking application.

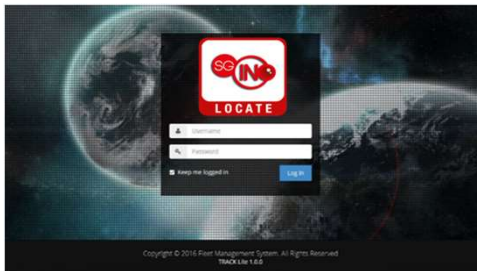
Quick Start Guide

Ver 1.0

SGINO Locate

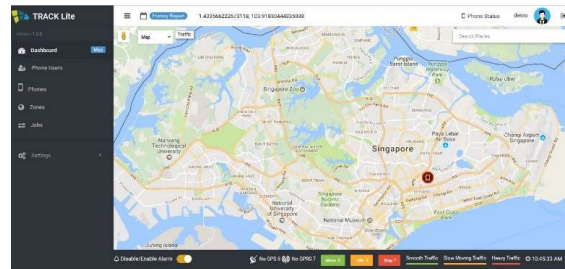
Viewing location via Web portal

1 Login Page



Go to: <http://track-asia.com/sgino>
Input the IMEI number of the phone for
the Username and Password

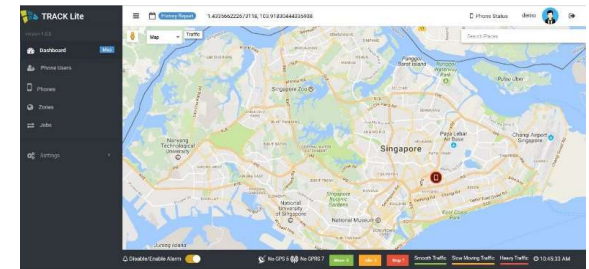
2 Main Dashboard Page



This is the main dashboard which you will see the
current where about of the phone.

- Click “Phone Status” at the top right hand
corner to view selected phone location.
- Click on the individual Phone marker on the
map to view more information.

3 Report Page



Click on “History Report”

- Select the Report wanted on the right panel
- Select the Phone and date wanted on the right
panel.
- Click the “Submit” Button